



WACACO[®] minipresso

EN	INSTRUCTION BOOK	2
DE	BEDIENUNGSANLEITUNG	7
FR	LIVRE D'INSTRUCTION	13
ES	LIBRO DE INSTRUCCIONES	19
BR	MANUAL DE INSTRUÇÕES	25
RU	справочное руководство	31
BG	КНИГА С ИНСТРУКЦИИ	37
IT	ISTRUZIONI D'USO	43
TH	คู่มือวิธีการใช้	49
CN	说明书	55
TW	說明書	60
KR	지침서	65
JP	説明書	70

Thank you for having chosen our product and for your confidence in our company. We have devoted all our knowledge, our creativity and our care into the Minipresso so that it has been designed to meet and even exceed your expectations. We are confident Minipresso will serve you well for many years.

Minipresso give you freedom to savour your favorite espresso on the go, at home or at work. Although it is compact, light and portable, it provides a high extraction quality, offering the ultimate espresso experience wherever you are and at any time of the day.

Share these moments with friends and enjoy every espresso!

WARNING

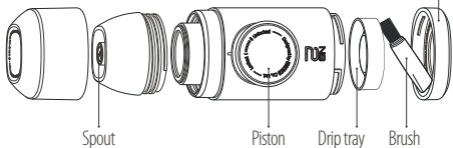
Carefully read the following instructions before using your Minipresso machine. In this way you will avoid the risk of personal injury and damage to the appliance.

- Do not use the Minipresso for other than its intended use.
- After removing the packaging, make sure that the Minipresso is intact.
- The packaging elements (plastic bags, etc.) must not be left within reach of children as they are potential sources of danger.
- Do not allow the Minipresso to be used by children or uninstructed persons. Children must be kept under supervision to prevent them from playing with the Minipresso.
- Do not action the piston if the outlet head is not in position.
- Never consume liquid directly from the Minipresso as contents may be hot.
- Do not put Minipresso on a gas or electric hot plate, in an oven, a microwave or a dishwasher.
- Only use clean water in the Minipresso. Do not use any other fluid.
- Never heat up the water directly in the water tank. Water must be heated by an external heating source such as a kettle and then poured into the water tank.
- Clean the Minipresso carefully and regularly.
- Do not use any accessories not recommended by Wacaco Company Limited, as this may cause injury.

- Do not use the Minipresso if it is showing any sign of breakdown or malfunction.
- Do not attempt to dismantle or repair. Contact Wacaco Company Limited in case of malfunction.
- If you burn yourself, immediately pour cold water on burnt area and call a doctor if necessary.
- Do not apply higher than usual force on the piston if this one is stuck. High pressure may cause damage.

DESCRIPTION

| Espresso cup || Outlet head || Main body || Water tank | Water tank lid



INTENDED USE

The Minipresso is intended to a personal use. It is not suitable for commercial, professional, collective or industrial use.

Use of the Minipresso in any manner other than as directed herein could cause harm to persons and void the warranty. Wacaco Company Limited will not be responsible for injury or damage resulting from improper use of the Minipresso.

SAFETY APPROVAL



Minipresso complies with major safety approvals regarding food contact materials. Minipresso is 100% BPA free for food contact materials.

ENVIRONMENT PROTECTION



Packaging materials and appliance contain recyclable materials.

DISPOSAL

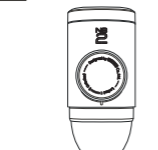
EN

Minipresso has been manufactured using high quality materials that can be reused or recycled. Dispose of the appliance in a suitable waste collection centre.

FOR BEST RESULTS

- Use fresh filtered water.
- Preheat all Minipresso parts as well as the cup with hot water.

INSTRUCTIONS



①

Unclip the cup.



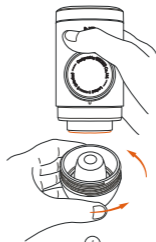
②

Unscrew the outlet head.



③

Place compatible capsule.



④

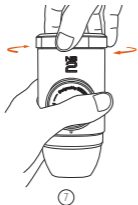
Screw back tightly the outlet head in order to pierce the capsule.



5 Unscrew the water tank lid.
! Remove the brush and the drip tray.



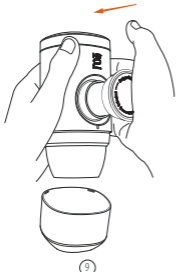
6 Add boiling water into the water tank.
! Place the Minipresso on level & stable surface.



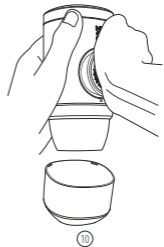
7 Screw tightly the water tank lid.
! Avoid burning yourself.



8 Unlock the piston from its traveling position by rotating it to the left.



9 Start pumping slowly above the cup.



10 The first 8 strokes will fill the capsule of water. Continue pumping slowly until no more coffee come out.

CLEANING

EN

Clean the hatched areas under running water to remove all remain coffee. For all others areas, we highly recommend to only use a humid soft cloth. Let the parts dry separately.



⚠ WARNING ⚠

Sharp cutter inside, only use the provided brush to clean the cutter and the surrounding area.

⚠ WARNING ⚠

Do not put any Minipresso parts into dishwasher.

WARRANTY

Wacaco Company Limited warrants the Minipresso against defects that are due to faulty materials or workmanship for a period of 12 months from the date of purchase. Purchase receipt must be kept as a reference for warranty to be valid (you are suggested to take photocopy of your purchase receipt for long time storage). This warranty is not transferable and does not entitle to compensation in cash.

Wacaco Company Limited disclaims all responsibility for incidental or consequential damages caused by use of this appliance. This warranty does not cover:

- Damage resulting from improper use, abuse, neglect, commercial use or any other use of this appliance not found in this printed manual.
- The replacement of the o-rings.
- Damage of an aesthetic nature, damage due to corrosion or gradual deterioration.

Any disassembly or repairs done by unauthorized persons **EN** will void the warranty.

For any repair or exchange, the cost of return is at your expense. If your Minipresso fails within one year, please contact your Wacaco local distributor or support@wacaco.com directly for repair or exchange.



Share your experience on social medias by using #minipresso.