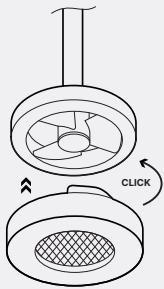


NANOFOAMER™ PRO

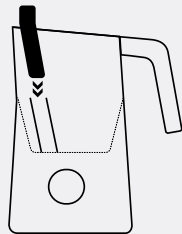
CLICK HERE

OR SCAN TO
VIEW QUICK
START GUIDE



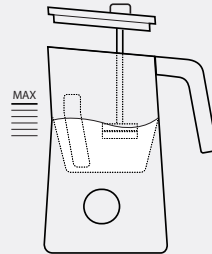
STEP 1

Attach the magnetic NanoScreen to the impeller by gently turning counter-clockwise until you feel a little click.



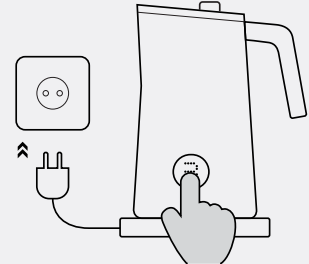
STEP 2

Insert the desired magnetic flow controller between the marked lines in the jug. It will magnetize in place.



STEP 3

Fill with desired milk quantity & close the lid firmly.



STEP 4

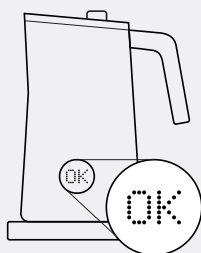
Plug in the power cord and place the NanoFoamer PRO on the base, then multi-touch the display button to select your preferred program.

Note: The underside of the jug must be dry before using the device.

Black flow controller:
Dairy milk
Small drinks
Easy-to-foam liquid

Blue & green flow controllers:
Plant-based milk
Hard-to-foam liquids
Large foamy drinks.

No flow controller:
Dry foam



STEP 5

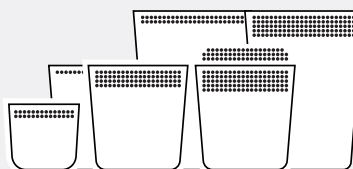
The NanoFoamer PRO will display "OK" and chime when ready at 55°C (130°F). The NanoFoamer PRO will continue heating until 65°C (150°F), chime again, and stop.

Press the button, or lift the NanoFoamer PRO off the base anytime the display says "OK" to stop further heating.

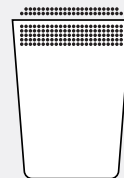
◀ LESS FOAM MORE FOAM ▶▶▶



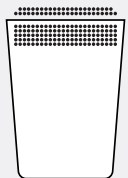
For small drinks



For most average-sized drinks



For large drinks



For cold drinks

Mix and match your cup size, flow controller, and program mode to find your perfect drink.

ABOUT THE FLOW CONTROLLERS

Flow controllers tweak the spinning vortex to adjust for the varying viscosities of milk types.

DAIRY MILK

The slow flow controller prevents excessive aeration on easy to foam milk types.

Step up to the medium flow controller if more foam is desired on large drinks.

PLANT BASED MILK

Every plant-based milk foams differently so we offer two options.

We recommend starting with the medium flow controller (blue) and stepping up to the green if your milk alternative is not aerating enough.



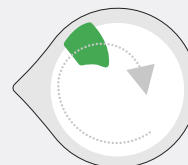
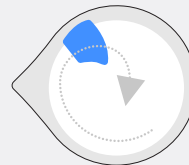
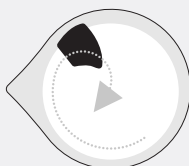
BLACK
SLOW



BLUE
MEDIUM



GREEN
FAST



OBSERVE & FINE TUNE



DURING THE AERATION STAGE

Switch to a faster flow controller if the milk is not aerating enough.

A quicker flow controller opens up the vortex to allow more air in.



DURING THE MICROFOAMING STAGE

This stage should be quiet with no aeration.

If you see and hear occasional aeration in this stage (deep vortex and audible sound), try a slower flow controller to close up the vortex.

FINE TUNING THE IMPELLER

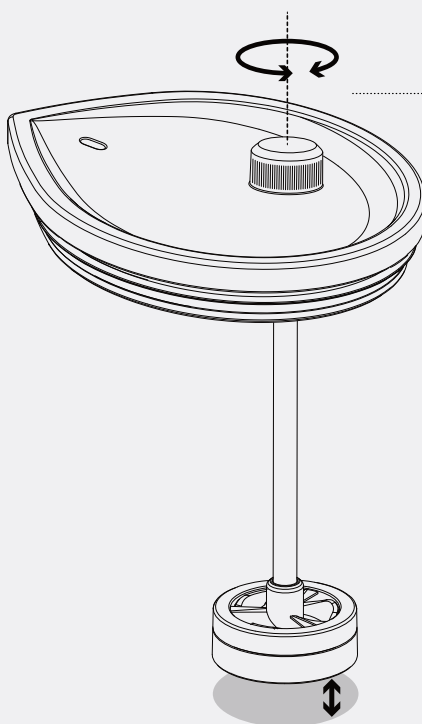
Adjust your impeller up or down to find the sweet spot, resulting in quiet operation and silky-textured milk.

OUTCOME OF ADJUSTMENTS

In most cases, adjust to find an excellent quiet balance, but note the following:

A higher impeller opens the vortex and promotes better flow through the NanoScreen, creating slightly more foam.

A lower impeller closes the vortex and constricts the flow through the NanoScreen, leading to marginally less foam. This is a great option for lower milk volumes.



- UP** COUNTER CLOCKWISE
- DOWN** CLOCKWISE
- 0.4mm 0.015" PER CLICK**

WARNINGS

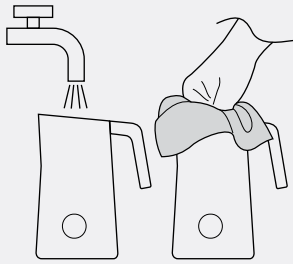
TOO HIGH

An impeller that is too high may lose magnetic traction, leading to a high-pitched, audible spinout. If this happens, lower the impeller a little and restart.

TOO LOW

If you hear the impeller touch the bottom of the jug, immediately raise it to avoid scratching the non-stick surface.

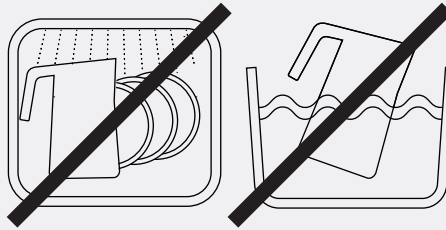
CLEANING AND MAINTENANCE



DO

Rinse the impeller & magnetic NanoScreen immediately after each use to prevent dry milk buildup.

Wash or wipe the jug with a soft sponge or cloth under running water.



DO NOT

Do not use abrasive soaps, cleansers, or scouring pads on any part of the appliance as it may damage the finish.

Do not submerge the jug in water.

Do not submerge the base in water.

Do not place any part in the dishwasher.

SAFE USE OF THE APPLIANCE

IMPORTANT SAFEGUARDS

- This appliance is intended to be used in household and similar applications such as staff kitchen areas in shops, offices, and other working environments; farmhouses; by clients in hotels, motels, and other residential-type environments; bed and breakfast type environments.
- Read all safety instructions before use.
- Only use the appliance with the base provided.
- Only plug the base into a suitable, earthed mains connection. Ensure that the power source's voltage is the same as that specified on the rating plate.
- Do not pull the cable over sharp edges, clamp it or allow it to hang down. Keep the cable away from heat and dampness.
- If the supply cord is damaged, it must be replaced by the manufacturer, its service agent, or similarly qualified persons to avoid a hazard.
- Disconnect the base from the mains when not used for long periods.
- Never unplug the machine with wet hands.
- Do not use the appliance if damaged. A damaged appliance can cause electric shock, burns, and fire.
- Never place the appliance on or beside hot surfaces.
- Do not use the appliance outdoors.
- Do not move the appliance while it is operating.
- Do not use the appliance other than for its intended use.
- Do not put any parts of the appliance in the dishwasher.
- Do not immerse the appliance or the base in water.
- Never leave the appliance unattended during operation.
- Be careful and avoid water spillage on the connector, which will cause electric shock.

- Do not touch the heating element surface after use.
- Misuse can cause electrical leakage.
- This appliance shall not be used by children. Keep the appliance and its cord out of reach of children.
- This appliance can be used by children aged 8 years and above if they have been given supervision or instruction concerning the use of the appliance in a safe way and if they understand the hazards involved. Children shall not make cleaning and user maintenance unless they are older than 8 and supervised. Keep the appliance and cord out of reach of children aged less than 8 years.

WARRANTY

Subminimal Pte. Ltd. warrants this product to be free from defects in materials or workmanship during normal and contemplated use for one year from the verifiable date of purchase.

THIS WARRANTY IS ONLY VALID FOR:

- The original consumer.
- The product is purchased through an authorized reseller with a receipt for proof of purchase.

This warranty does not cover damage to the product resulting from accidents, misuse, or amateur repairs, operation with the wrong type of current or voltage, improper maintenance, normal wear and tear, water damage, or failure to comply with safeguards listed in this document.

Subminimal makes no other representations or warranties for NanoFoamer PRO. Subminimal's sole obligation shall be the repair or replacement of the portion of the product that is found to be defective under normal use during the one-year warranty period.

ENVIRONMENTAL PROTECTION & DISPOSAL

Packaging materials and the appliance contain recyclable materials that can be recovered or recyclable. Separating the remaining waste materials into different types facilitates recycling valuable raw materials. You can obtain information on disposal from your local authority.

CONTACT US

hello@subminimal.com



VIEW QUICK START GUIDE:

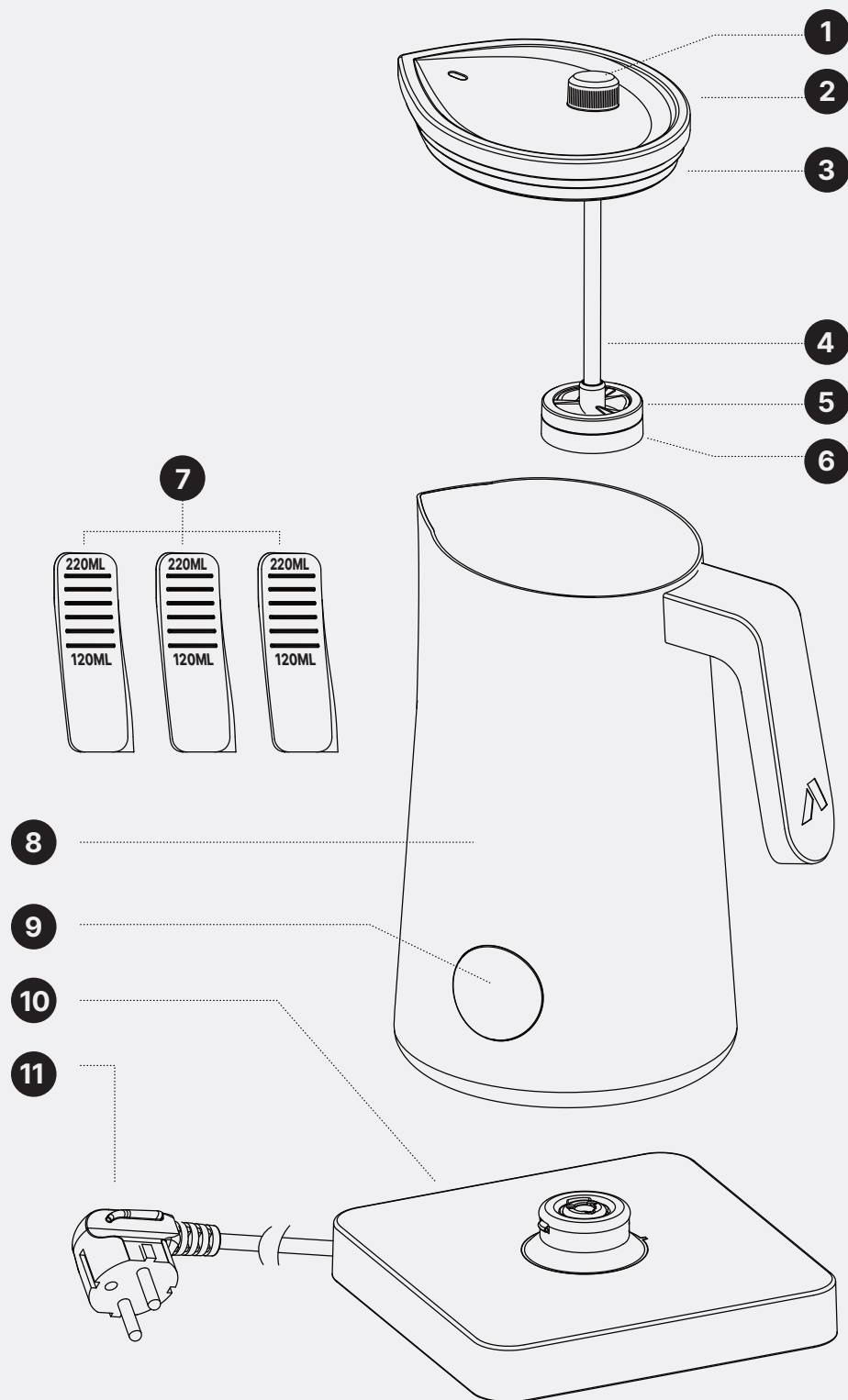
subminimal.com/pages/pro_start

subminimal®

Subminimal Pte. Ltd.
14 Robinson Road 08-01A
Singapore, 048545
www.subminimal.com
hello@subminimal.com

MAIN PARTS

1. Impeller Height Adjuster
2. Lid
3. Lid Seal
4. Shaft
5. Impeller
6. Magnetic NanoScreen
7. Flow Controllers
8. NanoFoamer PRO
9. Button / Display
10. Base
11. Power Plug



NANOFOAMER PRO™

AUTOMATIC MICROFOAM MAKER

MODEL NUMBER: NFPRO-02-BL-EU

Voltage 220-240V ~ 50/60Hz

Power 400W

Dimensions 12×14×20cm 4.7×5.5×8"

Weight 0.9kg 2lbs

Capacity 220ml 7.4oz

Cord Length 0.7m 28"



DISPOSAL

Please dispose of the packaging according to your local waste regulations. Cardboard and paper go to "recovered paper", foil goes to resource collection (potential recyclable). This product should never be disposed of in normal household waste at the end of its service life. It must be delivered to a collection point for the recycling of electrical and electronic goods. This is indicated by the symbol (dustbin with cross) on the product, in the instruction manual or on the packaging. Ask your local disposal point about disposal. The materials are reusable according to their labelling. In the reuse, material recycling or other forms of using old appliances, you are making an important contribution in protecting our environment. Please ask your local government for a suitable disposal point (old appliance collection point of municipal disposal point). This way you are disposing of your appliance ecologically.